

3/2- or 5/2-Way, 30 – 116 PSI



The Type 6518/6519 intrinsically safe valves are used for process actuation in hazardous areas. Thanks to the intrinsically safe design and the choice of corrosion resistant materials, the valves can be used in a wide variety of demanding applications.

Process Specification

Nominal voltage	24 V/DC <small>(for further information also consult our data sheet „Recommended Barriers“)</small>
Pneumatic connections	1/4 NPT
Protection class	IP 65 with cable plug
Materials	
Pilot valve	Brass or stainless steel (1.4305)
Body	PA, glass fiber reinforced
Threaded port	Brass or stainless steel
Seal	FPM or PB (NBR and PUR)
Fluids	Lubricated or unlubricated compressed air, instrument air and nitrogen
Ambient temperatures	-13 up to 131°F
Electrical connections	Tag connectors according to DIN 43650A for cable plug type 2508
Mounting position	Any, preferably solenoid system upright

Burkert Contromatic USA
2602 McGaw Avenue
Irvine, CA 92614
Tel. 949.223.3100
Fax 949.223.3198
www.burkert-usa.com

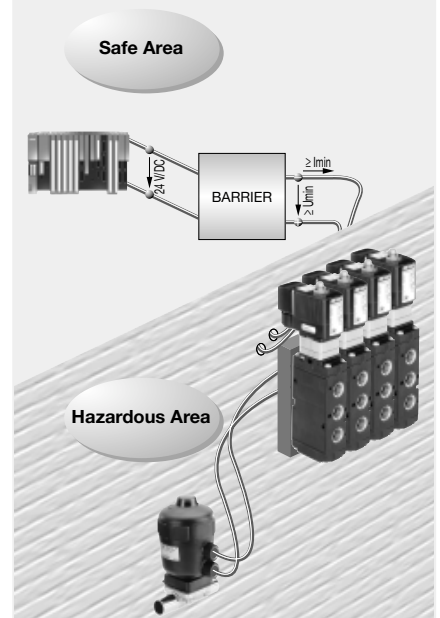
Burkert Contromatic Inc.
760 Pacific Road, Unit 3
Oakville, Ontario, Canada L6L 6M5
Tel. 905.847.5566
Fax 905.847.9006
www.burkert.ca

Advantages/Benefits

- ▶ PTB EEx ia IIC T6 approved
- ▶ FM IS / I, II, III / ABCDEFG approved
- ▶ High flow rates
- ▶ Long service life

Applications

- Chemical industry
- Pharmaceutical processing equipment
- Industrial waste water treatment
- Oil and gas industry

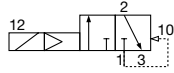


burkert
Fluid Control Systems

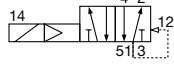
Technical Data

Circuit Function

C 3/2-way valve, servo-assisted, normally closed



H 5/2-way valve, servo-assisted, in de-energized position, port 2 pressurized and port 4 exhausted



Type	Circuit function	Orifice [inch]	QnN-Value (air) [l/min]	Pressure range [PSI]	Response times		Weight [lb.]
					opening [ms]	closing [ms]	
6518	C (3/2-way)	5/16"	1300	30 – 116	75	115	1.28
6519	H (5/2-way)	5/16"	1300	30 – 116	75	115	1.48

Stainless steel versions have connection screws in stainless steel as well.

Flow rate: QnN-value air [l/min]

Measured at 68°F, 87 PSI pressure at valve inlet and 14.5 PSI pressure difference

Pressure ranges [PSI]

Gauge measurements

Response times [ms]

Measured at valve outlet at 87 PSI and 68°F

Opening Pressure rise from 0 to 90%
Closing Pressure drop from 100 to 10%

Specifications - Ordering Chart (Other Versions on Request)

Circuit function	Orifice [inch]	QnN-Value (air) [l/min]	Seal material	Nominal pressure [PSI]	Body material (pilot)	Supply port material	Item-No.
C (3/2-way)	5/16"	1300	NBR + PUR	30 – 116	SS (1.4305)	SS	US07327
C (3/2-way)	5/16"	1300	NBR + PUR	30 – 116	SS (1.4305)	Brass, nickel-plat.	US08988
H (5/2-way)	5/16"	1300	NBR + PUR	30 – 116	SS (1.4305)	SS	US07328
H (5/2-way)	5/16"	1300	NBR + PUR	30 – 116	SS (1.4305)	Brass, nickel-plat.	US07329

Ordering Chart Accessories



Item	Description	Material	Item-No.
Cap nut	Additional protection against moisture	Stainless steel	649 554 P

Dimensions [mm]

